

GRM6 Antibody (Center)
Affinity Purified Rabbit Polyclonal Antibody (Pab)
Catalog # AP13735c**Specification**

GRM6 Antibody (Center) - Product Information

Application	WB,E
Primary Accession	O15303
Other Accession	NP_000834.2
Reactivity	Human
Host	Rabbit
Clonality	Polyclonal
Isotype	Rabbit IgG
Calculated MW	95468
Antigen Region	369-398

GRM6 Antibody (Center) - Additional Information**Gene ID** 2916**Other Names**

Metabotropic glutamate receptor 6, mGluR6, GRM6, GPRC1F, MGLUR6

Target/Specificity

This GRM6 antibody is generated from rabbits immunized with a KLH conjugated synthetic peptide between 369-398 amino acids from the Central region of human GRM6.

Dilution

WB~~1:1000

E~~Use at an assay dependent concentration.

Format

Purified polyclonal antibody supplied in PBS with 0.09% (W/V) sodium azide. This antibody is purified through a protein A column, followed by peptide affinity purification.

Storage

Maintain refrigerated at 2-8°C for up to 2 weeks. For long term storage store at -20°C in small aliquots to prevent freeze-thaw cycles.

Precautions

GRM6 Antibody (Center) is for research use only and not for use in diagnostic or therapeutic procedures.

GRM6 Antibody (Center) - Protein Information**Name** GRM6**Synonyms** GPRC1F, MGLUR6

Function G-protein coupled receptor for glutamate. Ligand binding causes a conformation change that triggers signaling via guanine nucleotide-binding proteins (G proteins) and modulates the activity of down-stream effectors, such as adenylate cyclase. Signaling inhibits adenylate cyclase activity (By similarity). Signaling stimulates TRPM1 channel activity and Ca(2+) uptake. Required for normal vision.

Cellular Location

Cell membrane; Multi-pass membrane protein. Endoplasmic reticulum membrane; Multi-pass membrane protein. Golgi apparatus membrane; Multi-pass membrane protein. Cell projection, dendrite Note=Subject to trafficking from the endoplasmic reticulum to the Golgi apparatus and then to the cell membrane

Tissue Location

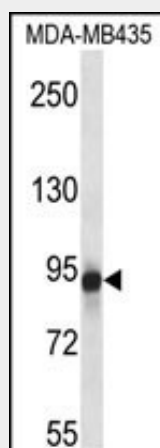
Detected in melanocytes.

GRM6 Antibody (Center) - Protocols

Provided below are standard protocols that you may find useful for product applications.

- [Western Blot](#)
- [Blocking Peptides](#)
- [Dot Blot](#)
- [Immunohistochemistry](#)
- [Immunofluorescence](#)
- [Immunoprecipitation](#)
- [Flow Cytometry](#)
- [Cell Culture](#)

GRM6 Antibody (Center) - Images



GRM6 Antibody (Center) (Cat. #AP13735c) western blot analysis in MDA-MB435 cell line lysates (35ug/lane). This demonstrates the GRM6 antibody detected the GRM6 protein (arrow).

GRM6 Antibody (Center) - Background

L-glutamate is the major excitatory neurotransmitter in the central nervous system and activates both ionotropic and metabotropic glutamate receptors. Glutamatergic neurotransmission is involved in most aspects of normal brain function and can be perturbed in many neuropathologic conditions. The metabotropic

glutamate receptors are a family of G protein-coupled receptors, that have been divided into 3 groups on the basis of sequence homology, putative signal transduction mechanisms, and pharmacologic properties. Group I includes GRM1 and GRM5 and these receptors have been shown to activate phospholipase C. Group II includes GRM2 and GRM3 while Group III includes GRM4, GRM6, GRM7 and GRM8. Group II and III receptors are linked to the inhibition of the cyclic AMP cascade but differ in their agonist selectivities.

GRM6 Antibody (Center) - References

Rose, J.E., et al. Mol. Med. 16 (7-8), 247-253 (2010) :
Fonseca, F., et al. Mol Diagn Ther 14(3):171-178(2010)
Beqollari, D., et al. Mol. Pharmacol. 76(5):992-997(2009)
Need, A.C., et al. Eur. J. Hum. Genet. 17(7):946-957(2009)
Xu, X., et al. Mol. Vis. 15, 2094-2100 (2009) :